



AMF BakeTech Continuous Proofer

*MegaSaver & MaxiSaver 10 Foot Radius,
MidiSaver 7 Foot, or Classic 5 Foot Designs*

Consistent proof with year-in, year-out reliability. Each proofer is built with the features bakers ask for!

- MegaSaver & MaxiSaver Double Oval with 10' (3048 mm) radius curves
- MidiSaver Double Oval with 7' (2134 mm) radius curves
- Classic Double Oval with 5' (1524 mm) radius curves
- MegaSaver & MaxiSaver reduces speeds by 20% - another BakeTech first



Features of AMF BakeTech's Proofing System are:

- Stainless steel enclosure - 2b inside and #3 finish outside
- 4" (102 mm) thick insulation with vinyl gaskets
- Cam lock, self-supporting, sanitary construction
- Personnel doors and heated wall window
- Top access hatch, ladder and top perimeter safety rails
- Extruded aluminum proofer conveyor structure and supports
- Stainless steel track-bolted construction
- Stainless steel grids with magnets and/or centering guides
- Plated main chain with heavy duty ball bearing construction
- Main chain oiler with drum pump
- Electric variable drive system with take-up outside or inside
- Drive service platforms
- Grid washer or cleaning brushes
- Prewired electrical control panel, stainless steel optional
- PLC and touch screen operator interface

AMF Automation Technologies

5359 ROYAL WOODS PARKWAY • TUCKER, GA 30084
770/270-5911 • FAX 770/270-5313



AMF BakeTech Internal Proofer Conditioning Unit *Simpler and Superior*

AMF BakeTech's internal design provides maximum efficiency, plus we've eliminated overheating - even during the summer.

*Features of AMF
BakeTech's Conditioning
Unit are:*

- Conditioning unit with stainless ducting mounted inside
- Temperature range 80°F to 120°F (27°C to 49°C)
- Humidity range 80% to 95% relative humidity
- Digital controls with solid state probes
- Steam, electric or hot glycol heating coils
- Cold water spray mist provides humidity
- Cooling coils optional

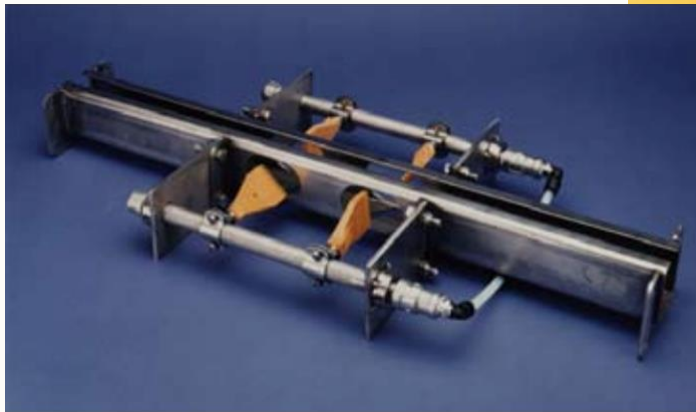
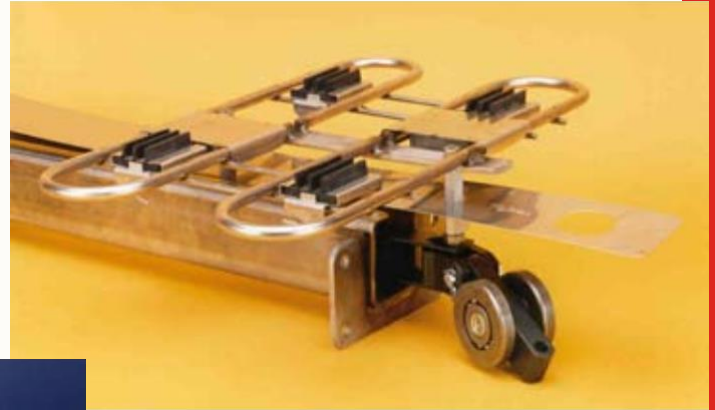


AMF Automation Technologies
5359 ROYAL WOODS PARKWAY • TUCKER, GA 30084
770/270-5911 • FAX 770/270-5313



AMF BakeTech Superior Engineering

3/8" (10 mm) stainless wire grid
- strength and simplicity
Stronger track
Improved chain



Chain blow-off removes
contaminants and improves
chain life

Main chain 9 point
injection oiler - precise
and accurate - keep your
investment well oiled



AMF Automation Technologies
5359 ROYAL WOODS PARKWAY • TUCKER, GA 30084
770/270-5911 • FAX 770/270-5313

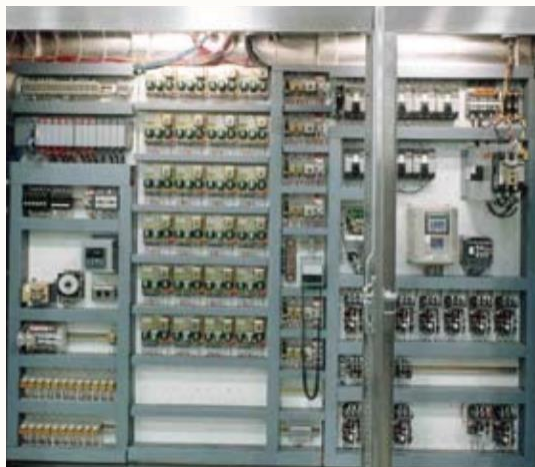
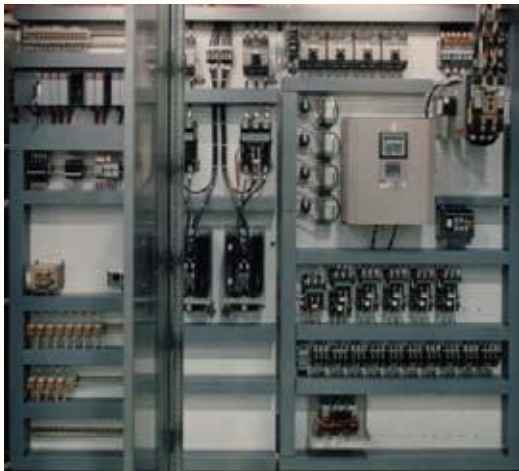


AMF BakeTech Operator Control Station *Accessible via the Internet*

All AMF BakeTech hardware and software is completely tested in simulation mode before installation assuring a fast start-up. Each system component can be individually operated for diagnostic and service purposes.



- Touch screen color graphics
- Alarm diagnostics and alarm history
- Fully automatic mode plus manual service mode
- Product tracking follows pans thru proofer and oven
- Trending screens for temperature, humidity, amperage and more
- Built to American Standards or CE Standards for Europe
- VFD Variable Speed Controls and Allen Bradley PLC
- Fully prewired, tested and software simulated



AMF BakeTech PLC Electric Control Panels

AMF Automation Technologies
5359 ROYAL WOODS PARKWAY • TUCKER, GA 30084
770/270-5911 • FAX 770/270-5313