



PLASTIC TRAY UNSTACKER



- **Automatically Unstacks Plastic Shipping Trays to Feed Downstream Loaders**
- **Self-monitoring System to Prevent Doubles or Damaged Trays from Entering the System**
- **Up to 35 Trays Per Minute**

FEATURES & BENEFITS

Ergonomic, User Friendly Design

- Low profile with emphasis on operator convenience
- Menu-driven controls for ease of use
- No operator intervention required to remove double trays

Versatility and Accuracy

- Plastic Tray Unstacker can serve both bread and bun lines
- Low back pressure infeed
- Maintains system efficiency by eliminating double/bent trays

PLASTIC TRAY UNSTACKER

MECHANICAL FEATURES

- Textured belt infeed conveyor with clutch brake drive ensures smooth tray stack feed
- Dual side belt driven tray elevator for smooth tray transfer
- Powered transfer rollers with finger separators for efficient single tray feed
- Double tray/bent tray reject with tray catcher prevents doubles or damaged trays from entering the system



Infeed Conveyor



*Discharge Conveyor
with Tray Reject*



Tray Elevator

ELECTRICAL FEATURES

- Operator interface is provided for easy and accurate machine set-up
- Programmable controller allows the Tray Unstacker to respond to system demand
- Sensor to detect double/bent trays
- VFD controlled motor drives
- Painted machine mounted electrical panel

OPTIONS

- Stainless Steel machine mounted electrical panel
- Interface options
- PLC options
- Right or left hand operator interface location

SPECIFICATIONS

Electrical Requirements:

200/208/230/240/460/480/575/600 volts, 3 phase, 60 Hz

Total connected load: 7 KVA

Air Requirements: 1 SCFM @ 80 PSIG

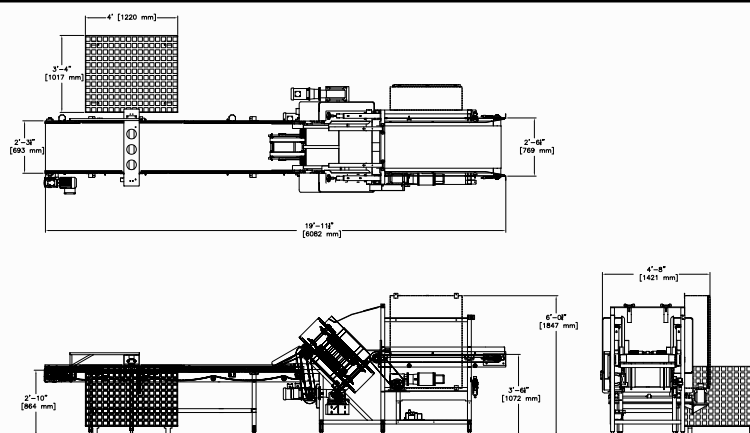
Up to 35 trays per minute based on 18 to 20 high tray stacks at infeed

Approximate Shipping Dimensions:

230" x 61" x 72"

(5842 mm x 1549 mm x 1829 mm)

DIMENSIONAL DRAWING



Headquarters:

2115 W. Laburnum Ave.
Richmond, Virginia 23227
Tel: 1-800-225-3771
or 1-804-355-7961
Fax: 1-804-342-9724
sales@amfbakery.com

Europe Office:

6 The Sidings
Station Road, Guiseley
Leeds LS20 8BX, England
Tel: 44-1943-875703
Fax: 44-1943-871806
sales-europe@amfbakery.com

Asia Office:

Room 15-2, A-Building
Thunis Dev. Building
No.11 Hui Xin East St.
Chaoyang District
Beijing, China 100029
Tel: 86-10-64823613
Fax: 86-10-64934259
sales-asia@amfbakery.com

FOR MORE INFORMATION PLEASE CALL YOUR ACCOUNT MANAGER OR

1-800-BAKERS-1
www.amfbakery.com

AMF's focus on continuous improvement may result in changes to machinery specifications without notice.